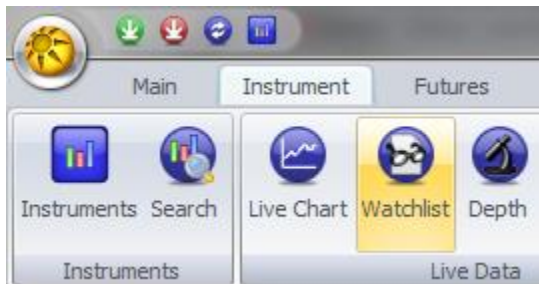


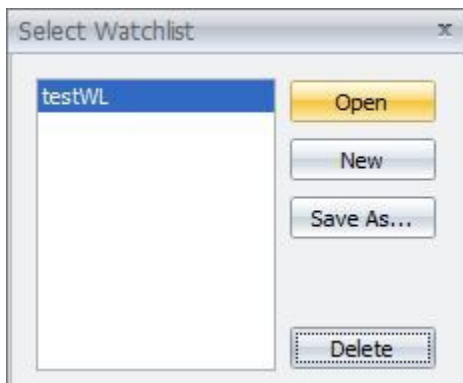
Creating a Whatchlist

Create a Watchlist with the instruments you want to trade and view live.

To do this, click on “Instruments” in the Menu, then click on Watchlist.



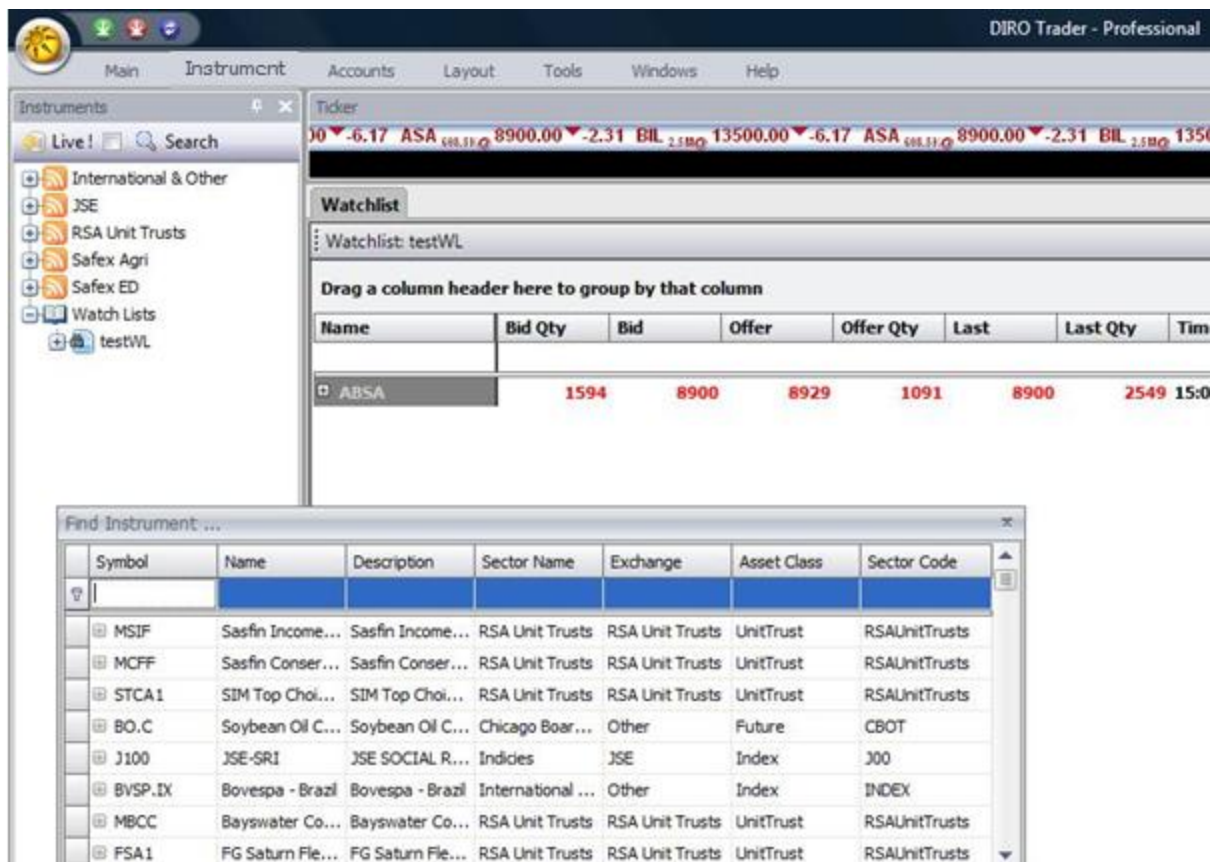
A box will appear where you can create/Open or delete a Watchlist. For our purposes, click on “New” to create a new watch list. Enter a name and click “Open”.



An empty watch list tab appears. All we need to do now, is drag the instruments onto this window which you want to trade or just monitor live.

The easiest way to do this is to use the “Search” box to locate the instruments. The search box can be found at a number of locations, click on any one of them.

- Menu: Instruments → Search
- Menu: Accounts → Search
- Instruments panel (on the left side of the screen) also has a “Search” button at the top.



After the search box has appeared, type the symbol of the Instrument you wish to find (I used “asa” for this example) into the Symbol field. Drag the result to the open watch list window. Drag a couple more in there, and we will move on.

Why do I need a Watchlist:

1. You need a Watchlist to subscribe the instrument that is currently loaded, meaning if you have a live chart open without a watchlist the instrument you are looking at will not have live data. If you load the watchlist the instrument will subscribe and you will have live data on your live chart.
2. Watchlists are also used to trade futures and CFD's using Diro pro(See Trading on Diro Pro).