

Providers on Diro Pro

What are providers?

Providers are the connections you will need to connect, to be able to get a live feed and also to trade.

The different providers:

Market Data - The Market Data provider needs to be connected for you to be able to get the live feed.

Diro FIN - The Diro FIN provider needs to be connected if you want to trade futures and CFD's.

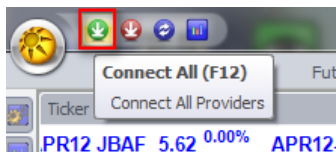
Diro AGRI - The Diro AGRI provider needs to be connected if you want to trade agricultural futures.

Diro SSF - The Diro SSF provider needs to be connected if you want to trade SSF's.

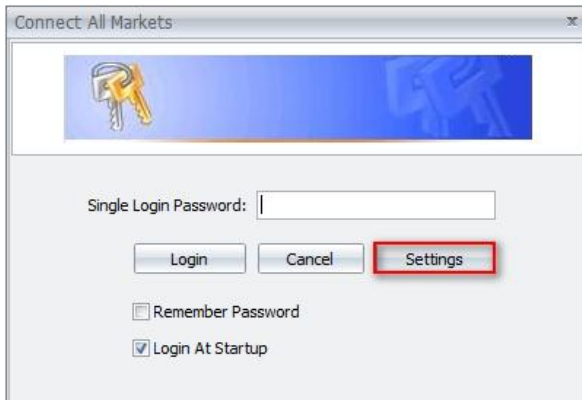
Diro YX - The Diro YX provider needs to be connected if you want to get the live feed for currencies and also to trade currencies.

How do I set-up and connect to the providers?

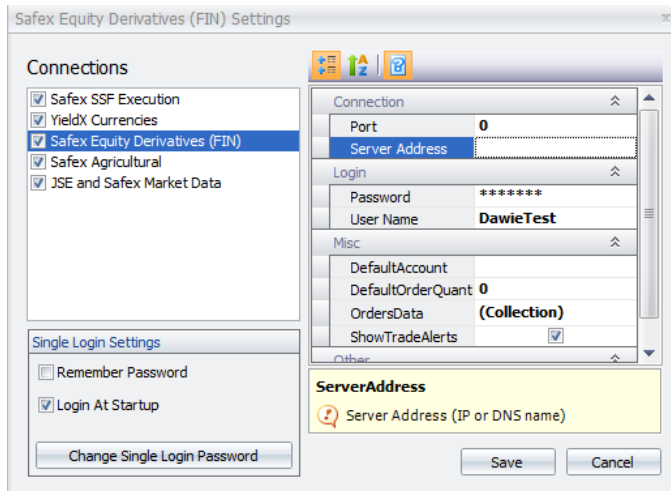
To set up the providers, click on the green encircled arrow at the top left corner of the Diro screen.



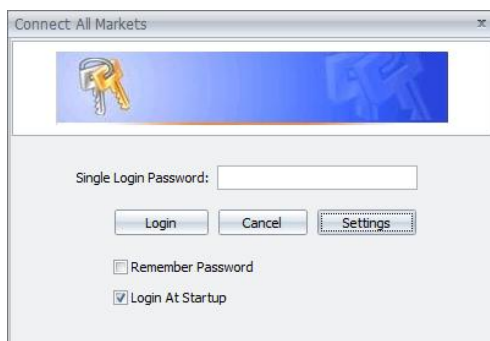
A “Connect All Markets” window will open, and then click on “Settings”.



A new window will open where you will be able to select and enter the settings for the providers you want to use.



Once providers are set up, you can connect to them. There are two ways of connecting the providers, through Single log-in where you have one universal password and it connects all the providers you have set up,



or you can connect to the providers one by one where you click on the provider that is displayed on the bottom of the screen and then click on “Connect”.

