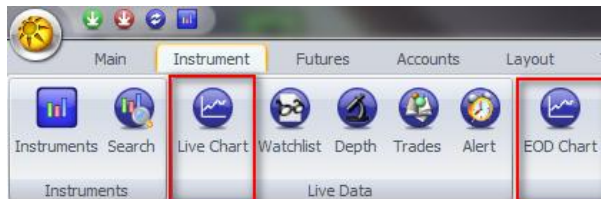


Charts on Diro Pro

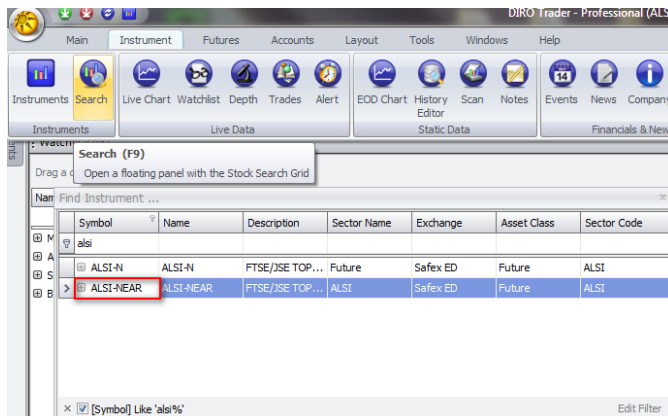
How do I create a chart?

You can create a new chart by clicking on the Instrument tab at the top of the screen; there you will be able to choose from a Live chart and also a EOD chart.



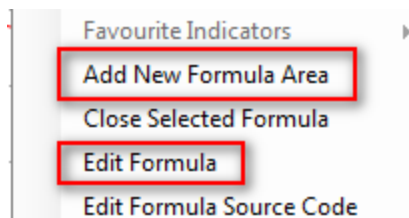
How do I view data on a chart?

To view data on a chart you will need to load an instrument onto the chart. To do this, click on the Instrument tab at the top of your screen and then click on Search. A search console will open where you will be able to search for the instrument(s) you want. When you have found the instrument you want you need to click and drag the instrument and drop it on the chart.



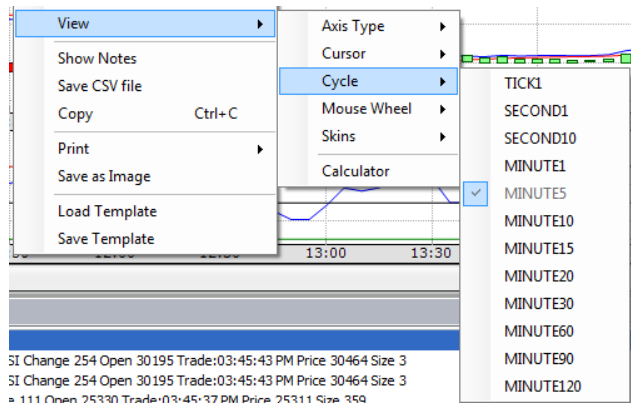
How do I load an indicator onto a chart?

You can load an indicator by right clicking on the chart. There you will see that you can; Add New Formula, this option allows you to load an indicator below your main chart; and Edit Formula, this option allows you to load an indicator onto your main chart.



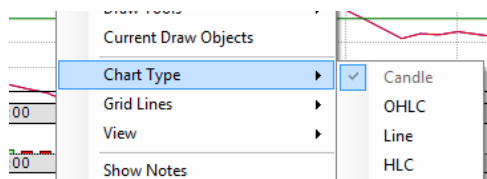
How do I change the cycle of the chart?

To change the cycle of a chart you can right click on the chart and go to the view option, there you will find a cycle option with all the favourite cycles. Click on the cycle you want and the chart will change to that cycle.



How do I change the chart type?

To change the chart type you can right click on the chart, there you will see an option Chart Type. There you will be able to choose the chart type you want.



How can I load draw tools on the chart?

To load draw tools on a chart right click on the chart, there you will see an option called draw tools. There you will see a series of draw tools you can add to your charts.

